

DOCUMENT 00 91 01 –

ADDENDUM NO. 1

1. GENERAL

This document includes requirements that clarify or supersede portions of the bid and/or contract requirements for the project. This Addendum is a Contract Document.

2. SUMMARY

The following changes, additions and deletions shall be made to the following document(s); all other conditions shall remain the same.

Please see attached Addendum #1 information from DTA Architecture dated 12/06/17.

Reminder:

Break out proposal into (2) separate line items:

- Cost for Portable Disconnect
- Cost to maintain Power and Fire Alarm for Restroom Buildings

END OF DOCUMENT

Addendum 01

Dreiling Terrones Architecture Inc.
1103 Juanita Avenue
Burlingame California 94010

To :

All Plan Holders

Addendum Issue Date: **12-06-2017**

Text **1 Page**

Drawings **6 Page**

Total Pages, including this page: **7 Pages**

Distributed Via: **Email**

Project Name **Portable Building disconnect – phase1**
Architect's Project # **1501d-IPV**
District: **East Side Union High School District**

The information contained herein is issued as Addendum to the Bid Documents for the subject Project as listed above. All information included herein shall become a part of the Bid Documents for that Project.

All bidders are required to acknowledge this Addendum on their Proposal Documents. Failure to acknowledge receipt of this Addendum shall deem the Proposal unresponsive and the proposal shall be disqualified.

Addendum Contents

Item	Reference	Subject	Type
Architectural			
1.	A1.1	Cap water and sanitary sewer line at shut off valve and clean out. SOV and clean out located along where paving meets grass. Refer to drawing	
	A1.1	Ramp to be removed by William Scottsman	
	FA2.2	Note 1 removed. Intrepid to reprogram FACP	
	Addendum 01	Refer to attached Civil Sketch "Addendum 01" for revised paving overlay.	
	Cameras	Remove all cameras on exterior light pole at center of site	
	Electrical pole	Per Electrical engineer, additional pole is not required as only #4 wires and fire alarm wires will be attached to it. Wires will not be sagging that much to be cause to install additional pole	

Issued: **12-06-2017**

Issued by: **Dreiling Terrones Architecture, Inc.**
Wayne Lin

cc: Bid List
District
File

END

Abbreviations

(E) (N) (R)	Existing New Remove	F.A. F.D. F.E. F.E.C. F.H. F.H.C. F.P. FDN. FIN. F.O.C. F.O.F. F.O.S. FRMG. FTG. FUT.	Fire Alarm Floor Drain Fire Extinguisher Fire Extinguisher Cab Fire Hydrant Fire Hose Cabinet Fireproof Foundation Finish Face Of Conc Face Of Finish Face Of Stud Framing Footing Future	P.H. P.LAM. P.T.D. PL. PLAS. PLWD. PR. PTDF R.D. R.O. R.W.L. REF. REINF. REQD RESIL. RM. RWD.	Panic Hardware Plastic Laminate Paper Towel Disp. Plate Plaster Plywood Pair Pressure Treated Douglas Fir Roof Drain Rough Opening Rain Water Leader Refer To: Reinforced Required Resilient Room Redwood
A.B. A.C. ADJ. ALUM. ANCH. APPROX. ARCH. ASPH.	Anchor Bolt Asphalt Concrete Adjustable Aluminum Anchor Approximately Architectural Asphalt	G.B. G.I. GA. GALV. GL. GR.	Grab Bar Galvanized Iron Gauge Galvanized Glass Grade	S.B. S.C. S.C.D. S.D. S.N.D. S.O.V. S.S. SCH. SEC. SHT. SHTG. SPEC. SPL. STA. STD. STRUC. SUSP.	Solid Blocking Solid Core Seat Cover Disp. Soap Dispenser Sanitary Napkin Dispenser Shut Off Valve Sewer System Schedule Section Sheet Sheathing Specification Splash Station Standard Structural Suspended
B.U. BD. BITUM. BLDG. BLK. BLKG. BM. BOT.	Built-Up Board Bituminous Building Block Blocking Beam Bottom	H.B. H.C. H.M. HR. HT.	Hose Bib Hollow Core Hollow Metal Hour Height	T.B. T.O.C. T.O.P. T.O.S. T.O.W. T.P.D.	Tack Board Top Of Concrete Top Of Pavement Top Of Sidewalk Top Of Wall Toilet Paper Disp.
C. C. BD. C.B. C.I. C.J. C.O.T.G. CAB. CEM CLG. CLO. CLR. COL. COMP. CONC. CONST. CONT. CORR. CTR. CTSK. CW	Conduit Chalk Board Catch Basin Cast Iron Construction Joint Clean Out To Grade Cabinet Cement Ceiling Closet Clear Column Composition Concrete Construction Continuous Corridor Center Countersink Cold Water	I.D. I.D.F. I.E. INSUL. INT. INV. J.H. JAN. JT.	Inside Diameter Intermed. Dist. Frame Invert Elevation Insulation Interior Invert Joist Hanger Janitor Joint	U.O.N. UR. V.C.T. V.C.TB. V.C.TB. V.C.TB. VEST.	Unless Otherwise Noted Urinal Vinyl Comp. Tile Vinyl Covered Tackboard Vestibule
D.F. D.S. D.S.P. DBL. DEPT. DET. DIA. DIM. DISP. DN. DWG.	Drinking Fountain Downspout Dry Standpipe Double Department Detail Diameter Dimension Dispenser Down Drawing	MAX. M.B. M.D.F. MEMB. MFR. M.H. MIN. MIR. M.O. MTD. MTL. MUL.	Maximum Marker Board Main Dist. Frame Membrane Manufacturer Minimale Minimum Mirror Masonry Opening Mounted Metal Mullion	W. W.B. W.C. W/C. W/O WD. WP. WT.	Waste White Board Water Closet With Without Wood Waterproof Weight
E.F. E.J. E.P. EA. ELEC. ELEV. EMER. ENCL. EQ. EQUIP. EWC	Exhaust Fan Expansion Joint Electrical Panel Each Electrical Elevation Emergency Enclosure Equal Equipment Electric Water Cooler	N N.I.C. NOM. N.T.S. O.C. O.H. OPO. OPP.	North Not In Contract Nominal Not To Scale On Center Overhang Opening Opposite		

Symbol Legend

	Grid Number
	Room Description Architectural Room Number Classroom number
	Door Number
	Keynote
	Indicates 1-Hour Rated Wall
	Detail Sheet Number
	Section Sheet Number
	Interior Elevation Sheet Number
	Elevation Point
	(E) Shear Wall
	Indicates Accessible Feature w/30"x48" clear floor space
	Fire Extinguisher 2-A:10-B:C with valid certification tag Provided by Owner, installed by Contractor
	Finish Floor Elevation
	(E) Wall to remain
	(N) Wall
	Object to be Demolished
	Line of object above
	Fence Line
	Centerline
	Match Line

East Side Union High School District
Independence High School
Portable Village Disconnect

General Notes

These Drawings and their content are and shall remain the property of Dreiling Terrones Architecture whether the project for which they were prepared is executed or not. They are not to be used by any person other than the District or for any other project or extension to this project except by agreement in writing with the Architect.

The Architect expressly reserves his common law copyright and other property rights relating to these Drawings and their content. These Drawings are not to be reproduced, altered or otherwise modified in any manner whatsoever except by the Architect. These Drawings and their content may not be assigned to a third party without written consent of the Architect. In the event of unauthorized use of these Drawings by a third party, the third party shall hold harmless and indemnify the Architect.

These Drawings are an instrument of services performed by the Architect for the benefit of the District. They are intended for use in a negotiated construction contract and, therefore, may not detail or specify all materials, manufacturers or assemblies. Details, assemblies and products commonly known to be industry standard for any given trade may not be fully detailed or specified. Where necessary, the Contractor shall provide samples, data, product literature as required to assist the District or the District's agent in making selections. For the purpose of estimating items not fully detailed the Contractor shall provide an allowance amount and so condition such estimates. The District and/or Contractor shall submit to the Architect, in writing, any requests for modifications to the plans or specifications by means of shop drawings, samples or other means as appropriate. Shop drawings that are submitted to the Architect for review do not constitute "in writing" unless it is brought to the attention of the Architect that specific changes are being suggested.

No guarantee for quality of construction is implied or intended by these Documents. The Contractor shall assume full responsibility for any construction deficiencies.

The District and Contractor shall hold harmless, indemnify and defend the Architect from any action initiated by the initial District, or any subsequent District, for construction deficiencies, modifications, substitutions, maintenance or any such condition which is beyond the control of the Architect.

All Contract Documents described in the Construction Contract shall be considered one document and are intended to be used as one document. Contractor and all sub-contractors shall review all documents prior to bidding. Sub-contractors are responsible for any information pertaining to their work no matter where it may occur in these Documents.

It is the intent of these Documents to provide for the construction of a moisture proof enclosure of interior space. If the District, Contractor or any Sub-contractors become aware of any assembly or condition, either shown in the Drawings or constructed on-site, which does not, in their opinion, satisfy this intent, it is their responsibility to notify the Architect within a reasonable amount of time so that the condition or assembly can be reviewed, and, if necessary, modifications can be made to the Documents or to the Work without impacting the progress of the Work.

All information pertaining to the site shall be, and shall remain, the District's responsibility. This information shall include legal description, deed restrictions, easements, site survey, topographic survey, location of existing improvements, soils report, and all related data.

Code Compliance
All work performed under the conditions of these drawings shall comply in every respect with the following:
2013 Cal. Building Standards Admin. Code, Part 1 T24 OCR
2013 Cal. Building Code (CBC), Part 2, T24 OCR
2013 Cal. Electric Code (CEC), Part 3, T24 OCR
2013 Cal. Mech. Code (CMC), Part 4, T24 OCR
2013 Cal. Plumbing Code (CPC), Part 5, T24 OCR
2013 Cal. Energy Code (CEC), Part 6, T24 OCR
2013 Cal. Elevator Safety Consus. Code (Part 7, T24 OCR)
2013 Cal. Historic Building Code (CHBC), Part 8 T24 OCR
2013 Cal. Fire Code (CFC), Part 9, T24 OCR
2013 Cal. Existing Building Code, Part 10 T24 OCR
2013 Cal. Green Building Standards (Cal Green) Code, Part 11 T24

2013 Cal. Referenced Standards Code (Part 12 T24, CCR)
CCR Title 19 Public Safety State Fire Marshal Regulations
AISC Manual of Steel Construction, 13th Edition
2012 Revised national Design Specification for Wood Construction
A01-318-05 Code & Commentary
NFPA 13 Automatic Sprinkler System, 2013 Ed.
NFPA 14 Standpipe & Hose Systems, 2013 Ed.
NFPA 17 Dry Chemical Extinguishing Systems, 2013 Edition
NFPA 17A Wet Chemical Extinguishing Systems, 2013 Edition
NFPA 24 Installation of Private Fire Service Mains, 2013 Ed.
NFPA 72 National Fire Alarm Code, 2013 Ed.
ADA Standards for Accessible Design, Appendix A of 28 CFR Part 36

Contractor shall submit recycling and waste reduction form, and it must be approved prior to issuance of building permit.

All applicable state and local codes, ordinances, legislation, as adopted by the City of San Jose at time of permit application.

It is the Contractors responsibility to identify and familiarize himself with current codes and ordinances including local variations on national or regional codes. Requirements of adopted codes shall supersede any conflicting requirements defined in these Documents. When a conflict is suspected the Contractor shall so advise the Architect in writing within a reasonable time so that the conflict, if it exists, can be resolved without impacting the progress of the Work.

The Contractor shall include and implement all pertinent requirements of this project as set forth in any conditions of approval attached to the project by governing agencies. These conditions shall become a part of the Contract Documents.

Site Examination
The Contractor shall thoroughly examine the site and satisfy himself as to the conditions under which the Work is to be performed. The Contractor shall verify at the site all measurements and conditions affecting his work and shall be responsible for same unless brought to the attention of the Owner or his agent prior to proceeding with the Work.

Dimension Control
It is the responsibility of the Contractor to check and verify all conditions, dimensions, lines and levels alignments indicated; proper fit and attachment of all parts is required. Should there be any differences between the Documents and the actual conditions, the Contractor shall notify the Owner or his agent in writing for clarification and/or adjustment. In the event of failure to do so, the Contractor shall be responsible for corrections required or subsequent changes occurring as a result of these differences.

Note to Subcontractors: Location of many items or assemblies is critical for alignment of other assemblies which may be installed by other trades and which may not be installed at the time of installation of your work. All Sub-contractors shall review the manner in which their work fits, aligns or comes into contact with work of other trades. The Contractor and each Sub-contractor shall review all Documents and will be responsible for information contained at any location within the Documents which pertains to their work. Deficiencies resulting from failure to do so will be removed and corrected at Contractors expense.

All dimensions and conditions shall be checked and verified, both in the Documents and on the job, by each Sub-contractor before they proceed with their work. Any errors, omissions, discrepancies or deficiencies shall be brought to the attention of the General Contractor prior to proceeding with the Work. The Contractor shall notify the Owner in writing for resolution.

Commencement of work by any Sub-contractor shall indicate a knowledge and acceptance of all conditions described in the Documents or existing on site which could affect their work.

All dimensions take precedent over scale. Where dimensions are not entirely clear the Contractor shall notify the Architect and request clarification.
DRAWINGS SHALL NOT BE SCALED.

Moisture Protection During Construction
Should any special situations or climatic conditions occur during construction the Owner, Contractor and Sub-contractors shall so notice and implement any measures required to assure the protection of materials and assemblies. The Contractor shall take all necessary measures to protect new or existing construction and materials from damage due to weather or any other adverse conditions.

Project Directory

Facilities Director

Julio Lucas

East Side Union High School District
830 North Capital Avenue
San Jose, CA 950133
(408) 357-5110

Architect

Dreiling Terrones Architecture, Inc.

**Richard Terrones, Architect
Wayne Lin, Project Manager**

1103 Juanita Avenue
Burlingame, California 94010
Voice: (650) 696-1200
Fax: (650) 343-9685

Electrical and Fire Engineers

Alliance Engineering Consultants, Inc.

**Ken Ngai
Henri Robino**

4701 Patrick Henry Drive, Bldg 10
Santa Clara, CA 95054
Voice: (408) 970-9888
Fax: (408) 970-9316

Sheet Index

Architectural Drawings

A0.0 General Notes, Index,
Symbols, Vicinity Map
Code Analysis Site Plan
Enlarged Site Plan
A1.1

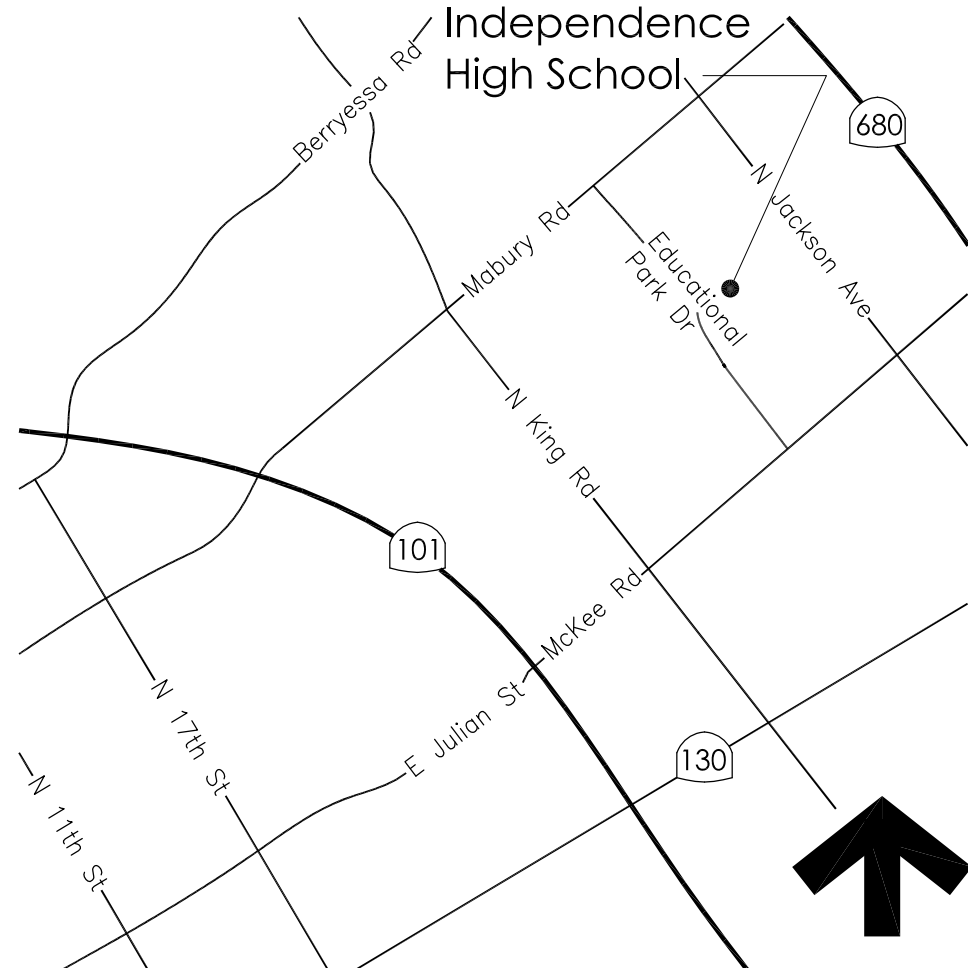
Electrical Drawings

E1.1 Electrical Site Plan
E2.1 Single Line Diagram and Details
FA1.1 Fire Alarm Site Plan
FA2.2 Fire Alarm Riser Diagram, Voltage Drop, and Battery Calculation

Scope of Work

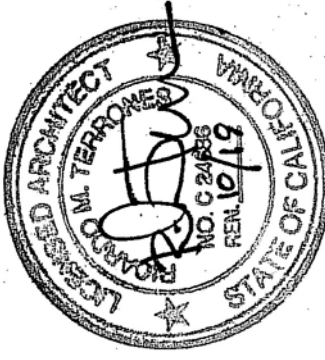
- Removal of (15) Relocatable 24'x40' classroom buildings and disconnect of associated utilities at Independence High School

Vicinity Map



DTA Dreiling Terrones Architecture Inc.
Architecture
Infrastructure
Environments

1103 Juanita Avenue
Burlingame, California
94010
650 696 1200
314 Center Street #220
Hayward, California
6548
707 343 1305



Portable Village Disconnect at
Independence High School

1776 Educational Park Drive
San Jose, California 95133

East Side Union High School District

11/28/2017: Demolition Documents

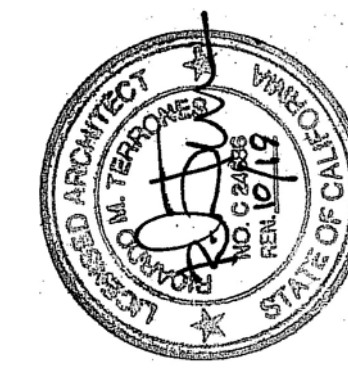
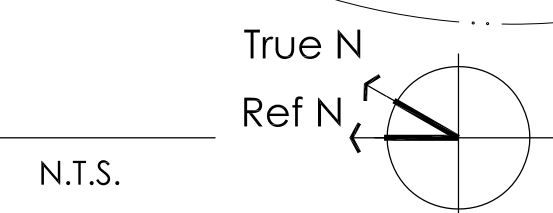
12/07/2017: Addendum 1

General Notes, Sheet Index
Directory, Vicinity Map

A0.0



1 Independence High School - Enlarged Site Plan



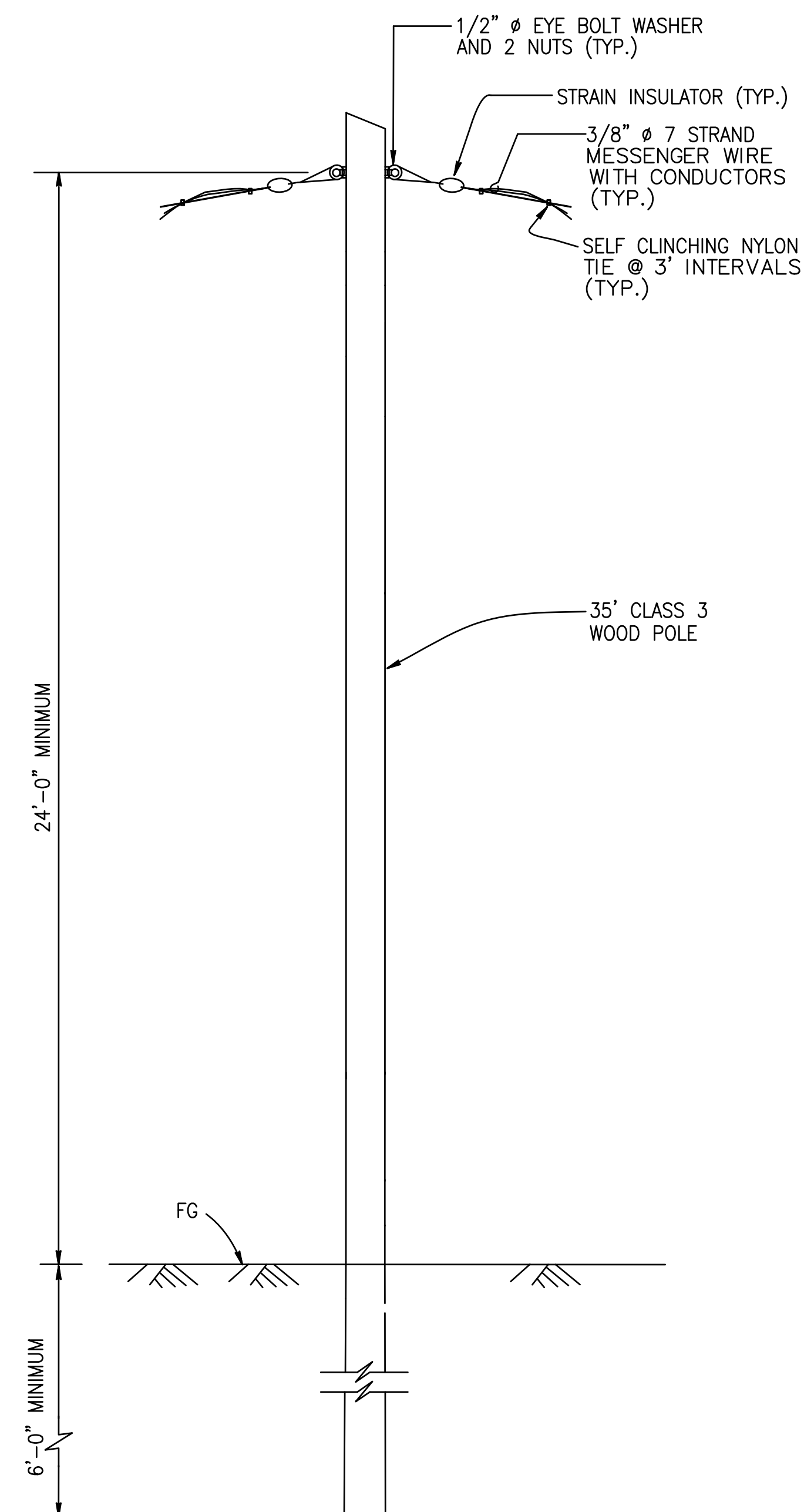


Removal of Portable Buildings

East Side Union High School District

E-1.1

- ① (E) ELECTRICAL ITEM TO REMAIN, MAINTAIN CIRCUIT CONTINUITY.
- ② DISCONNECT AND REMOVE CONDUIT AND WIRES UP TO SOURCE.
- ③ REMOVE AND SALVAGE ALL (E) PULLBOX, CONDUIT RISER, SUPPORT AND WIRES, U.O.N..
- ④ REMOVE AND RELOCATE (E) PULLBOX, 1 1/4" RISER AND SUPPORT TO (N) LOCATION. SEE NOTE ⑤.
- ⑤ RELOCATED (E) 1 1/4" RISER AND SUPPORT PER NOTE ④.
- ⑥ (1) 1 1/4" C
- ⑦ SEE SINGLE LINE DIAGRAM FOR WIRE SIZE.
- ⑧ CONNECT (N) AND (E) CONDUIT.
- ⑨ ALL (E) POWER, LOW VOLTAGE FEEDER CABLES FOR PORTABLES 5018 THRU 5022 SHALL REMAIN. MAINTAIN CIRCUIT CONTINUITY.
- ⑩ (N) WOOD POLE. SEE DWG. 2/E-1.1.
- ⑪ DISCONNECT (E) WIRES AND RECONNECT (N) WIRES AS SHOWN TO PUT IT BACK TO SERVICE.
- ⑫ PROVIDE EYEBOLT, WASHER, NUTS, INSULATOR AND OTHER REQUIRED SUPPORT AS SHOWN ON DWG. 2/E1.1.

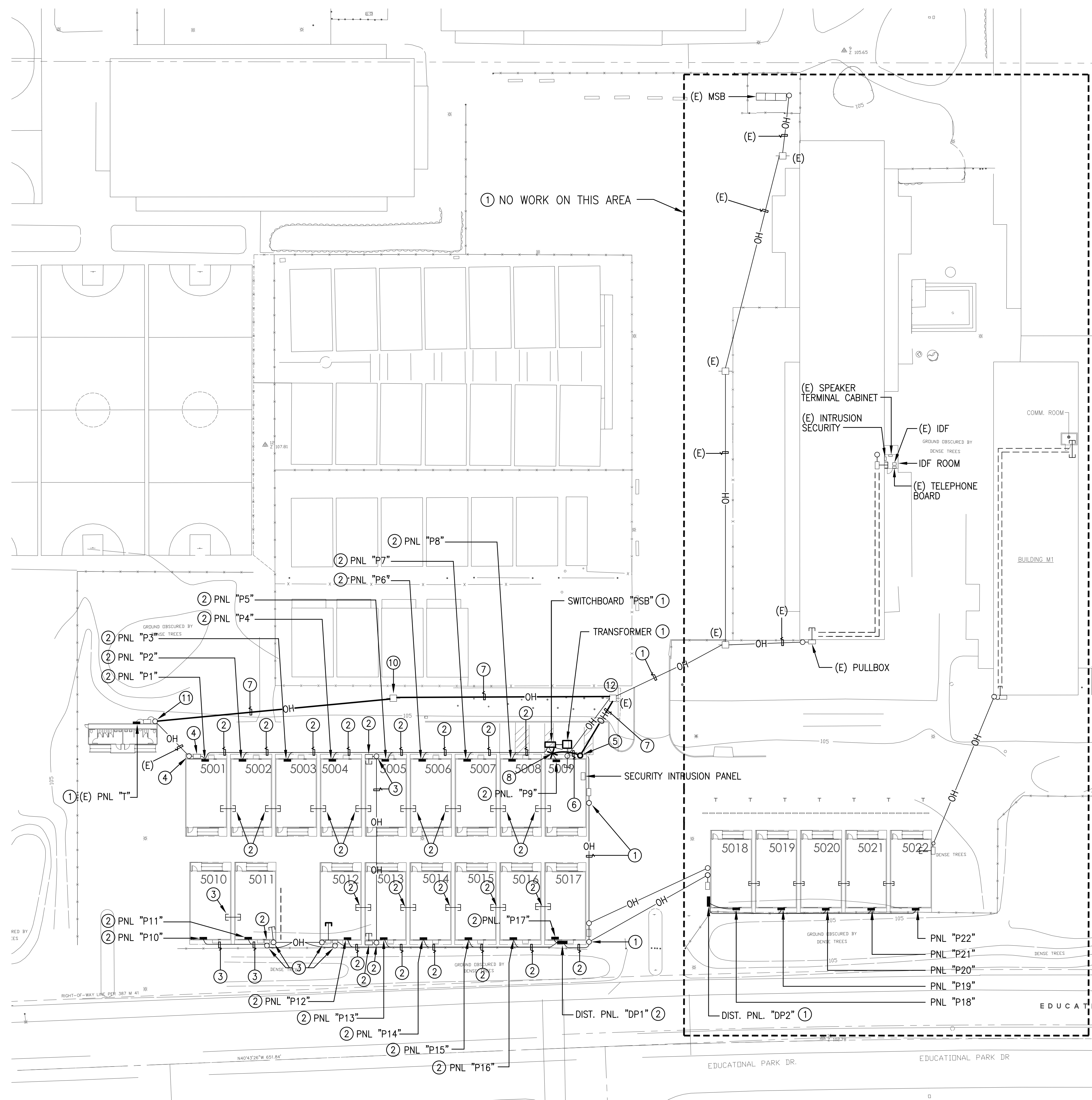


TEMPORARY WOOD POLE SUPPORT DETAIL

2

E1.1

NOT TO SCALE



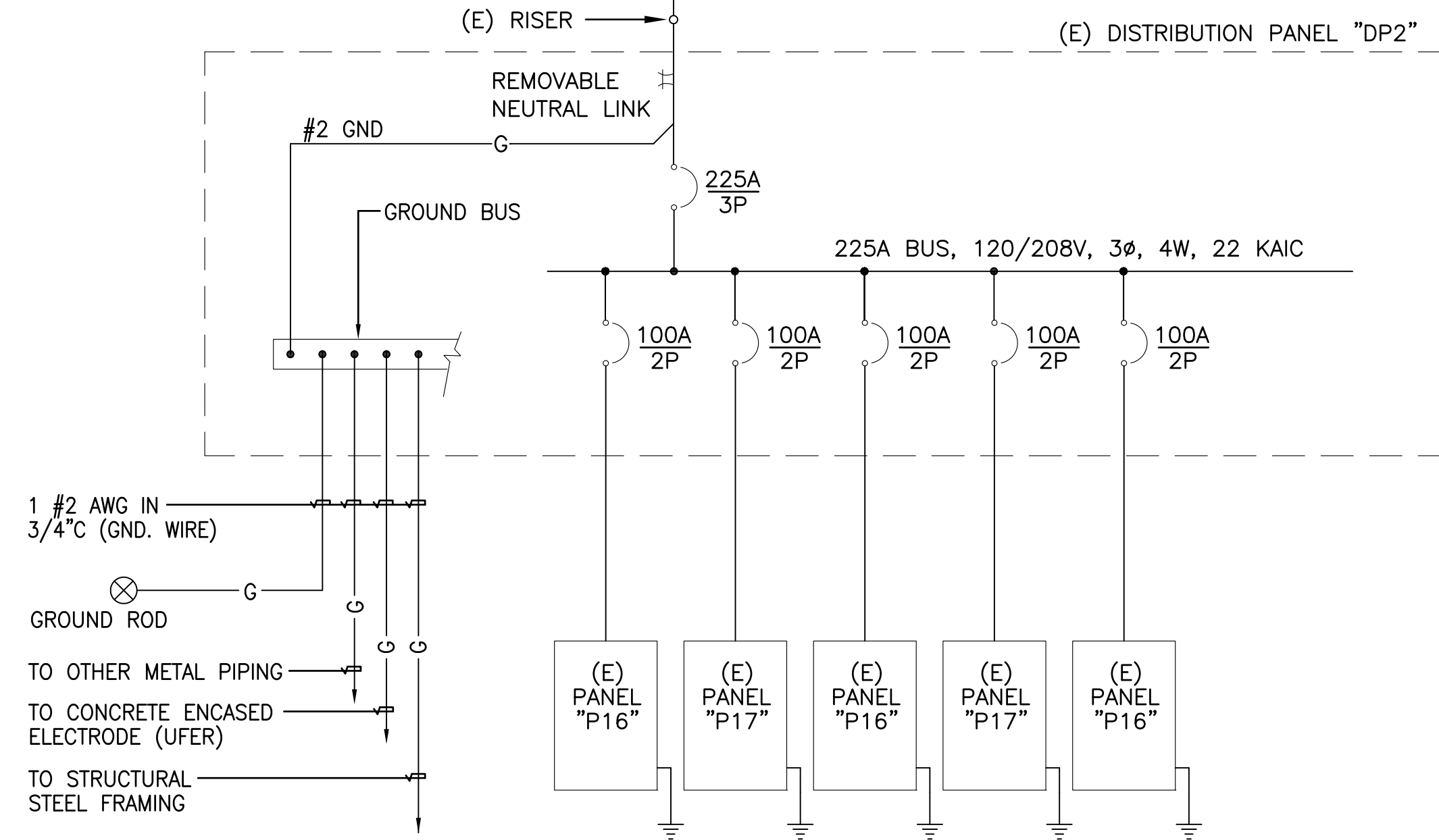
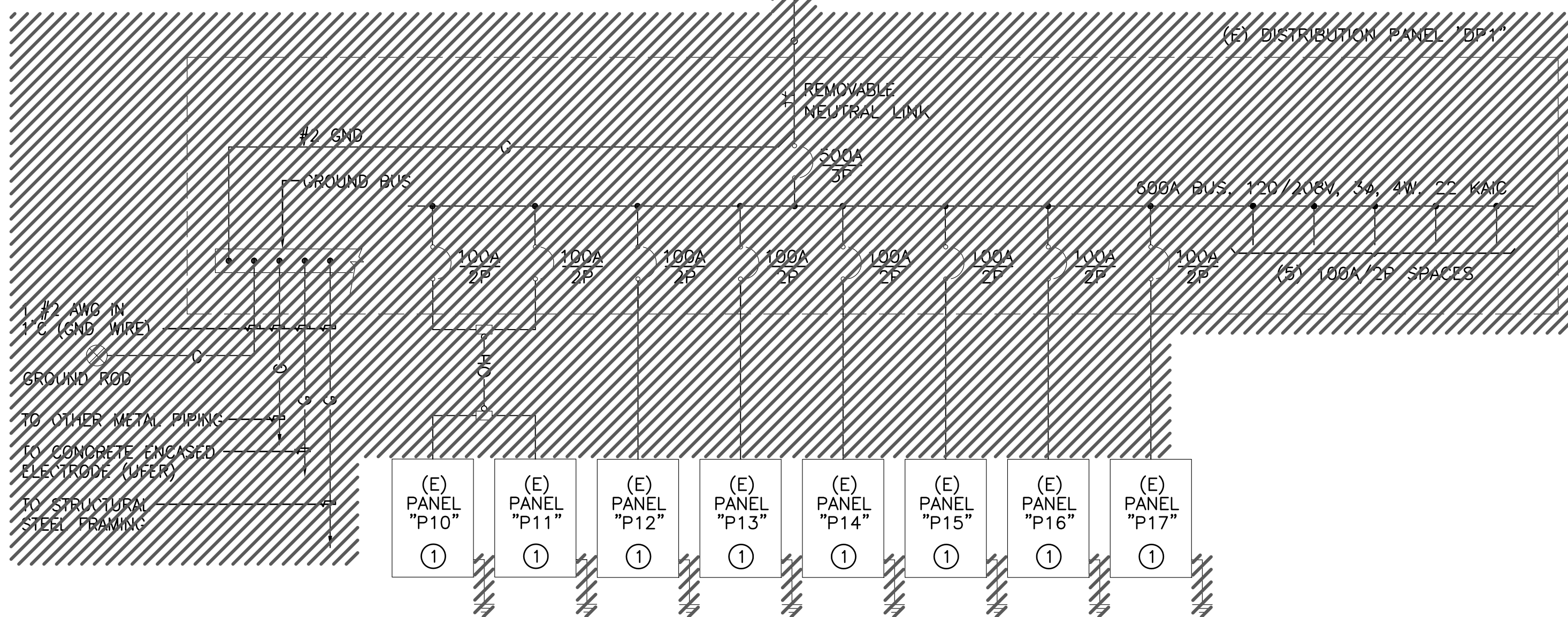
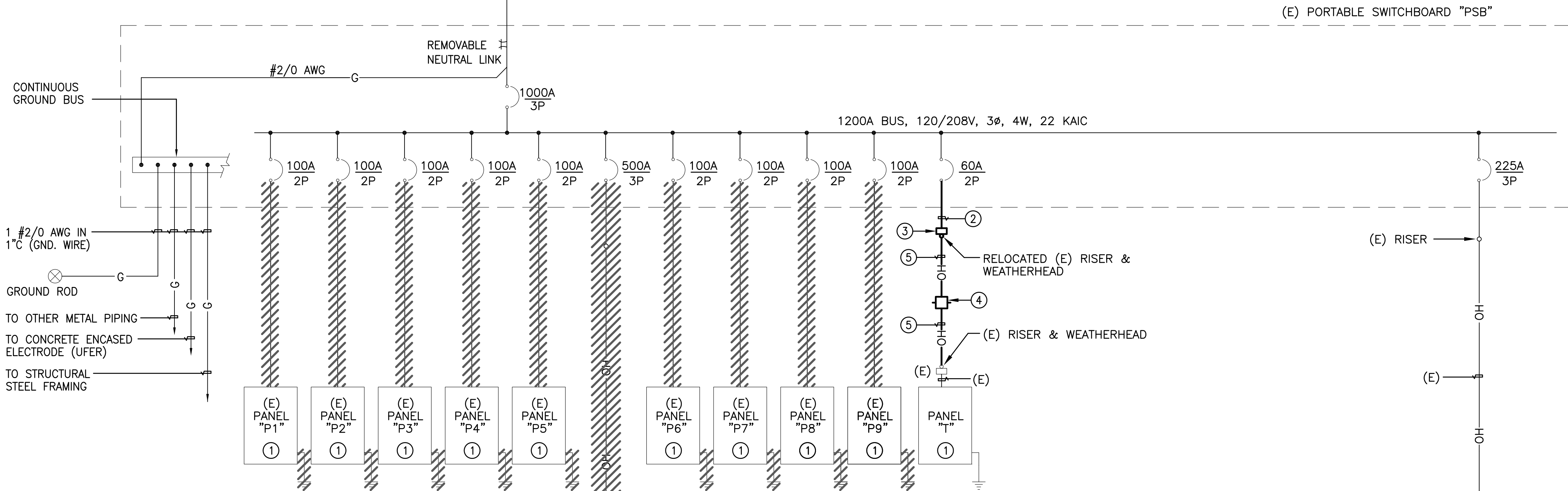
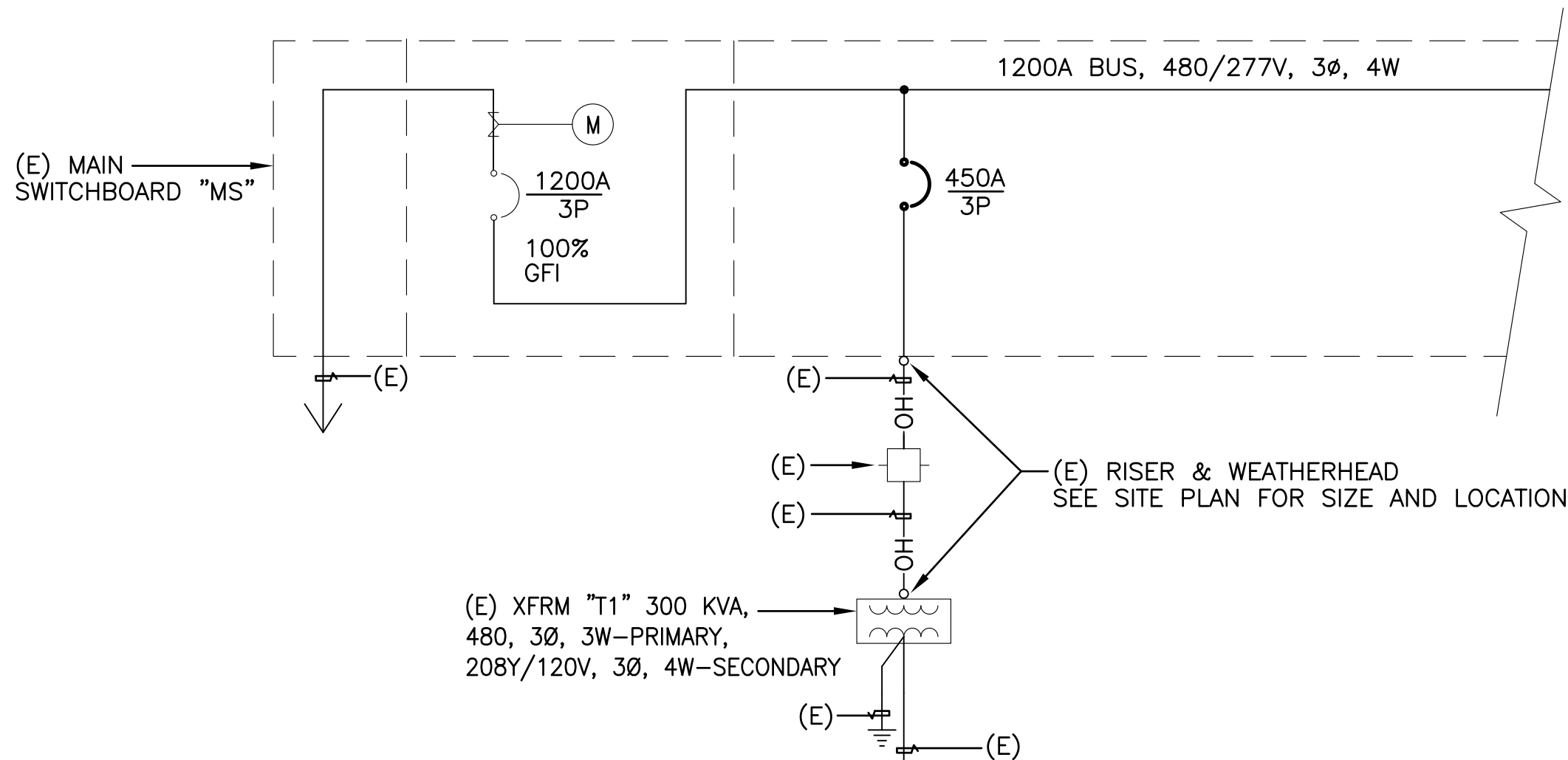
ELECTRICAL SITE PLAN ⑨

1

E1.1

SCALE: 1" = 30'-0"





1 SINGLE LINE DIAGRAM
E2.1 NOT TO SCALE

GENERAL NOTES:

1. ALL ELECTRICAL ITEMS ARE EXISTING, UNLESS OTHERWISE NOTED.

SHEET NOTES:

- ① (E) PANELBOARD PROVIDED BY PORTABLE MANUFACTURER TO REMAIN.
- ② 1 1/4"C, 3 #4 & 1 #10 (G).
- ③ SEE SITE PLAN FOR PULLBOX SIZE.
- ④ (N) WOOD POLE. SEE DWG. 2/E-1.1 FOR DETAIL.
- ⑤ 3 #4 & 1 #10 (G).

Removal of Portable Buildings
Independence High School
1776 Educational Park Drive
San Jose, California 95133
East Side Union High School District

11/28/2017: Demolition Documents

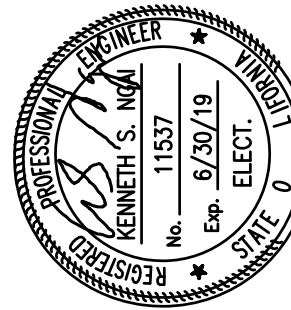
SINGLE LINE DIAGRAM
AND
DETAILS

E-2.1

1501

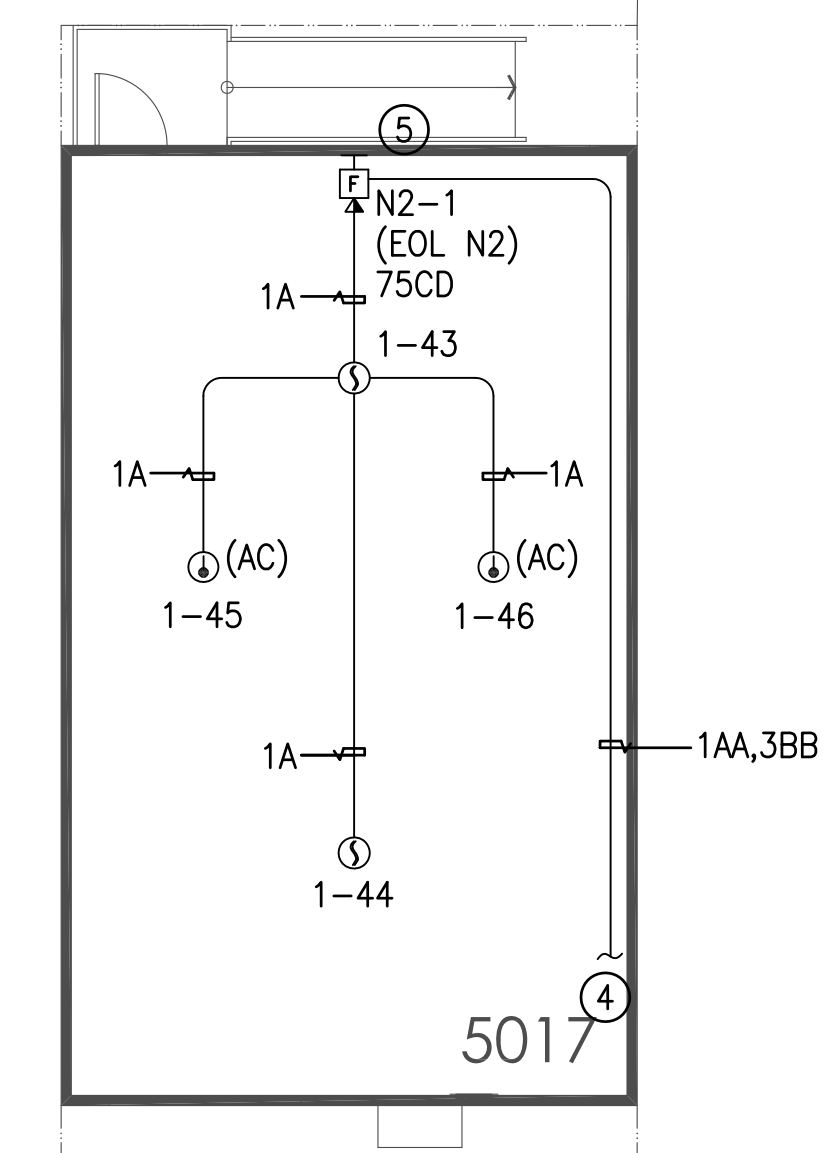
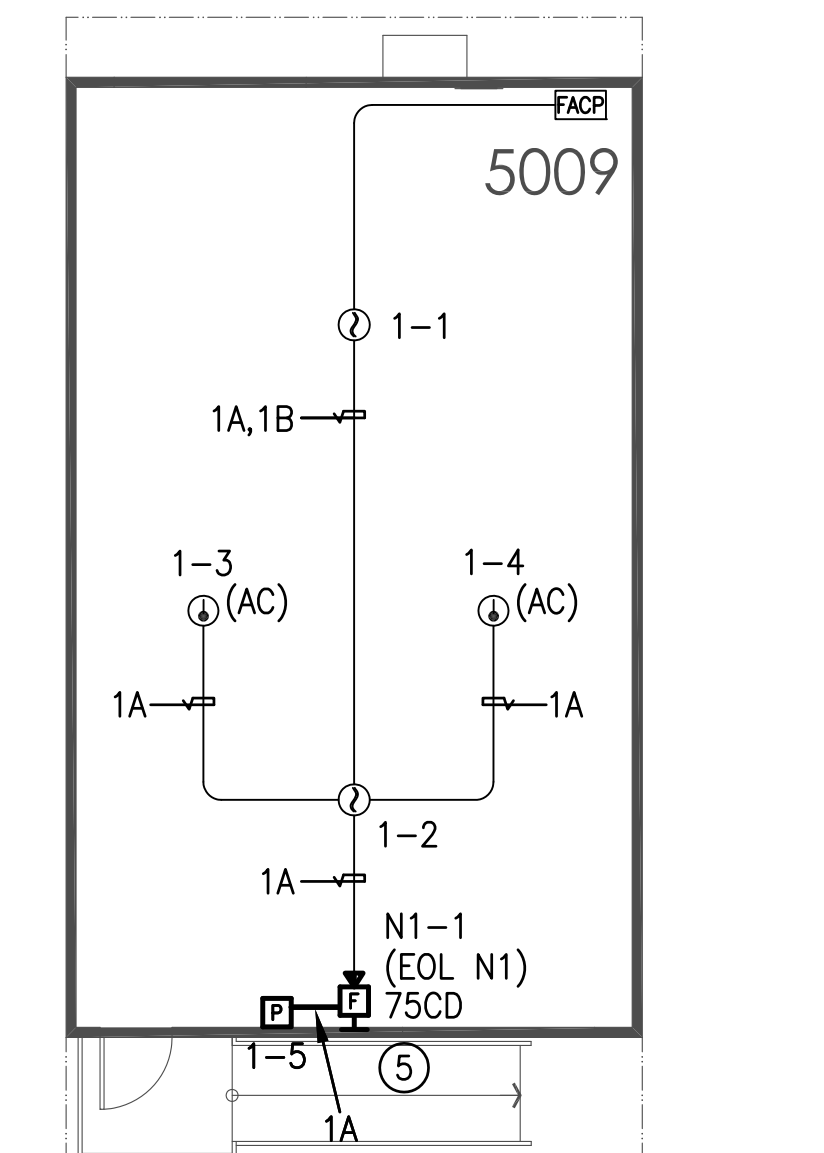
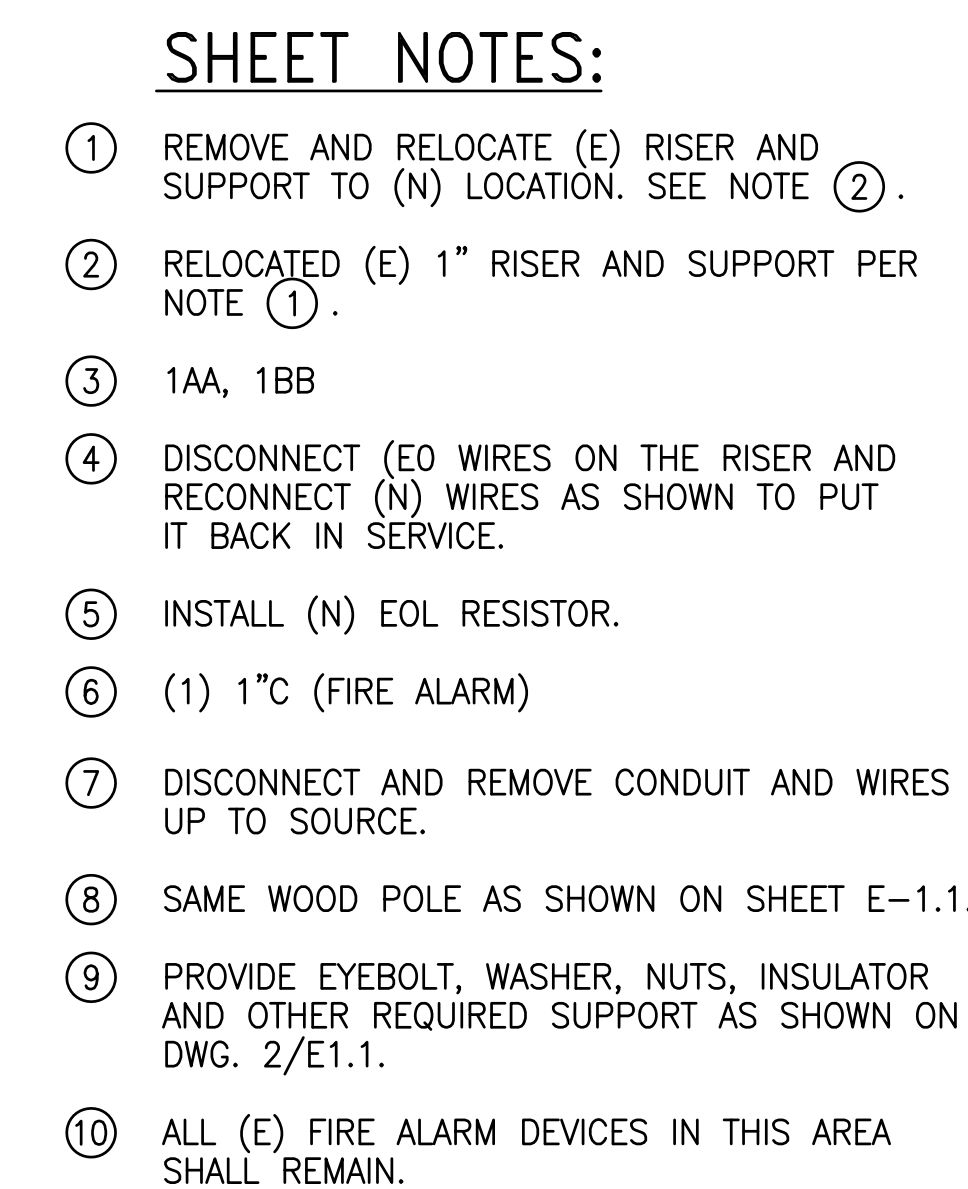
DTA
Drelling Terones Architecture Inc.

Architecture
Infrastructure
Environments



Alliance
Engineering
Consultants, Inc.
11537
6/20/19
PROJECT NO. 166-15-01

1103 Juana Avenue
Burlingame, California
94010
650 696 1200
314 Center Street #220
Heddingburg, California
65448
707 343 1305

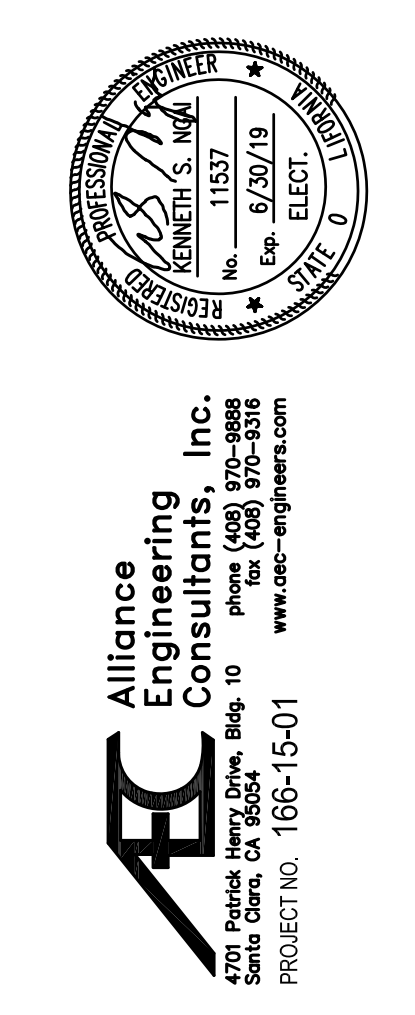


removal of Portable Buildings Independence High School

FIRE ALARM SITE PLAN

FA1.1

1501

DTA
Drilling Terrones Architecture Inc.

Removal of Portable Buildings
Independence H
1776 Educational Park Drive
San Jose, California 95133
East Sirlie Union High School District

11/28/2017: Demolition Documents

1501

FILE: M:\165-15-01_Independence HS\000000_DEMO-SITE-Nov2017\0demoSite_FA11.dwg Nov 28, 2017 3:48 pm Scale: 1=1 by: CHRIS
XREFS: INDEPENDENCE.dwg DTA-2436-PORT-VILLAGE - DEMO.dwg



Removal of Portable Buildings

East Side Union High School District

FIRE ALARM RISER DIAGRAM, VOLTAGE DROP AND BATTERY CALCULATION

1501

1 FIRE ALARM RISER DIAGRAM ②